



Apartment Home Features

SPACIOUS CLOSETS
ELEGANT COUNTERTOPS
LARGE OPEN FLOOR PLANS
GORGEOUS OAK CABINETRY

EAT-IN KITCHEN
GAS STOVE
DISHWASHER

Community Amenities

PET CARE
PLAYGROUND
PET FRIENDLY
AMPLE PARKING
CLOSE TO BUS LINE
LAUNDRY FACILITIES
COMMUNITY ACTIVITIES

ON-SITE LAUNDRY CENTER
CLOSE TO SCHOOLS & DAYCARES
WATER, SEWER & TRASH INCLUDED
24 HOUR EMERGENCY MAINTENANCE
FRIENDLY, PROFESSIONAL MANAGEMENT
ONLINE RESIDENT PORTAL



LAUREL PARK
APARTMENT HOMES

314.868.8220



Floorplans

SQ FT*

1 BED | 1 BATH

720

2 BED | 1 BATH

820

3 BED | 2 BATH

1,440

Parking Details

Surface Lot

VALET TRASH AND PEST CONTROL INCLUDED

*Square Footage measurements are approximate

Rate shown is monthly rent for base plan on a 12-month lease. Leases for 3-24 months are available. Please ask your leasing specialist for rates, based on your preferred length of lease.

Deposits and Fees

Application Fee: \$35 per adult applicant

Deposit: \$300-589/1 bedroom \$400-717/2 bedroom \$500-824/3 bedroom

Administrative Fee: \$100 per household

Pet Particulars

Dogs and Cats Allowed

Pet Deposit: \$250 per pet

Pet Rent: \$25/month per pet

Maximum one pet per apartment

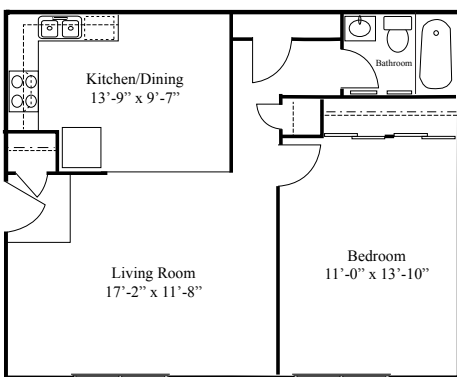
35 lb. weight limit

Breed restricted

Proof of current vaccinations required

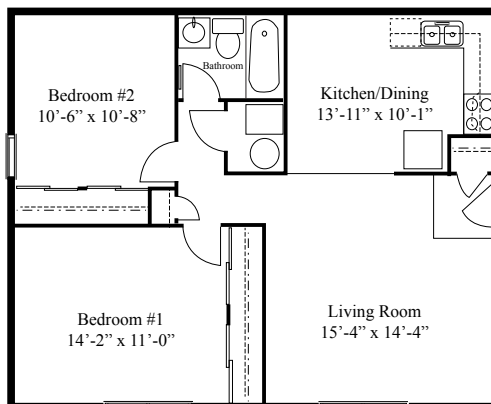
1 BEDROOM

1 BEDROOM | 1 BATH | 720 SQ FT



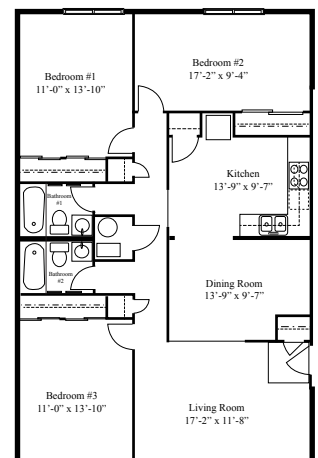
2 BEDROOM

2 BEDROOM | 1 BATH | 820 SQ FT



3 BEDROOM

3 BEDROOM | 2 BATH | 1,440 SQ FT



9605 Jacobi Ave, Saint Louis, MO 63136
manager@laurelparkmo.com | Website: LaurelParkMO.com



Effective Date: 5/1/21